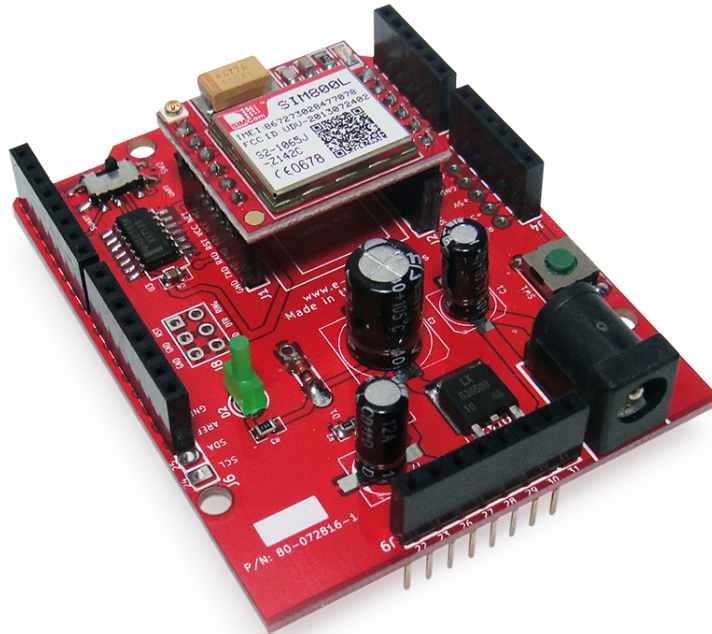


SIM800L SHIELD V1



Technical Manual Rev 1r0



SIM800L Shield is a quad-band GSM/GPRS module, a full support modem serial port where user can configure. Its a simple GSM shield SMS/Call ready to interface with your favorite gizduino microcontroller shield boards.

Features:

- With power saving technique so that the current consumption is as low as 0.7mA in sleep mode.
- Audio channel which includes two microphone input, a receiver output and a speaker output.
- A SIM card interface
- External antenna pad

General Specifications:

External input supply: +5VDC

Current Requirement: 1A - 2.6Amax

Power supply(modem): 3.4v~4.4V(4.0v)

Frequency bands: Quad-band

Baudrate: 9600bps

Temperature range:

Normal -40C ~ +85C

SIM interface: Support SIM card:1.8V,3V

Timing functions: Use AT command set

PCB Dimensions: 53mm x 70mm

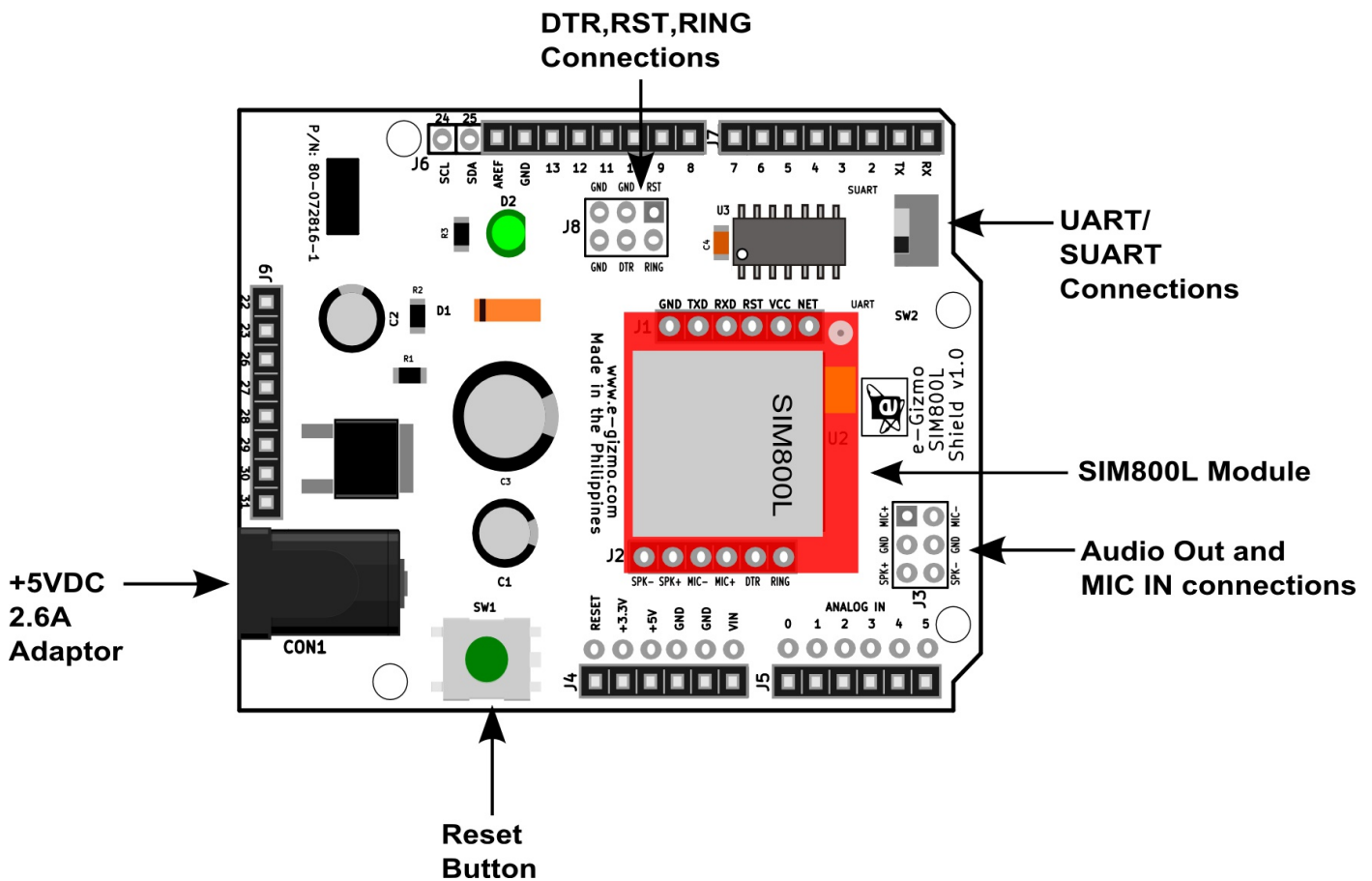


Figure 1. SIM800L Shield v1.0

Table 1: J1 Pin Description

Name	Descriptions
GND	Ground
TXD	Transmit Data
RXD	Receive Data
RST	SIM reset
VCC	4.0V Input Supply
NET	Network Status

Table 2: J2 Pin Description

Name	Descriptions
SPK-	Differential audio output (SpeakerN)
SPK+	Differential audio output (SpeakerP)
MIC-	Differential audio input (MicrophoneN)
MIC+	Differential audio input (MicrophoneP)
DTR	Data terminal ready
RING	Ring Indicator

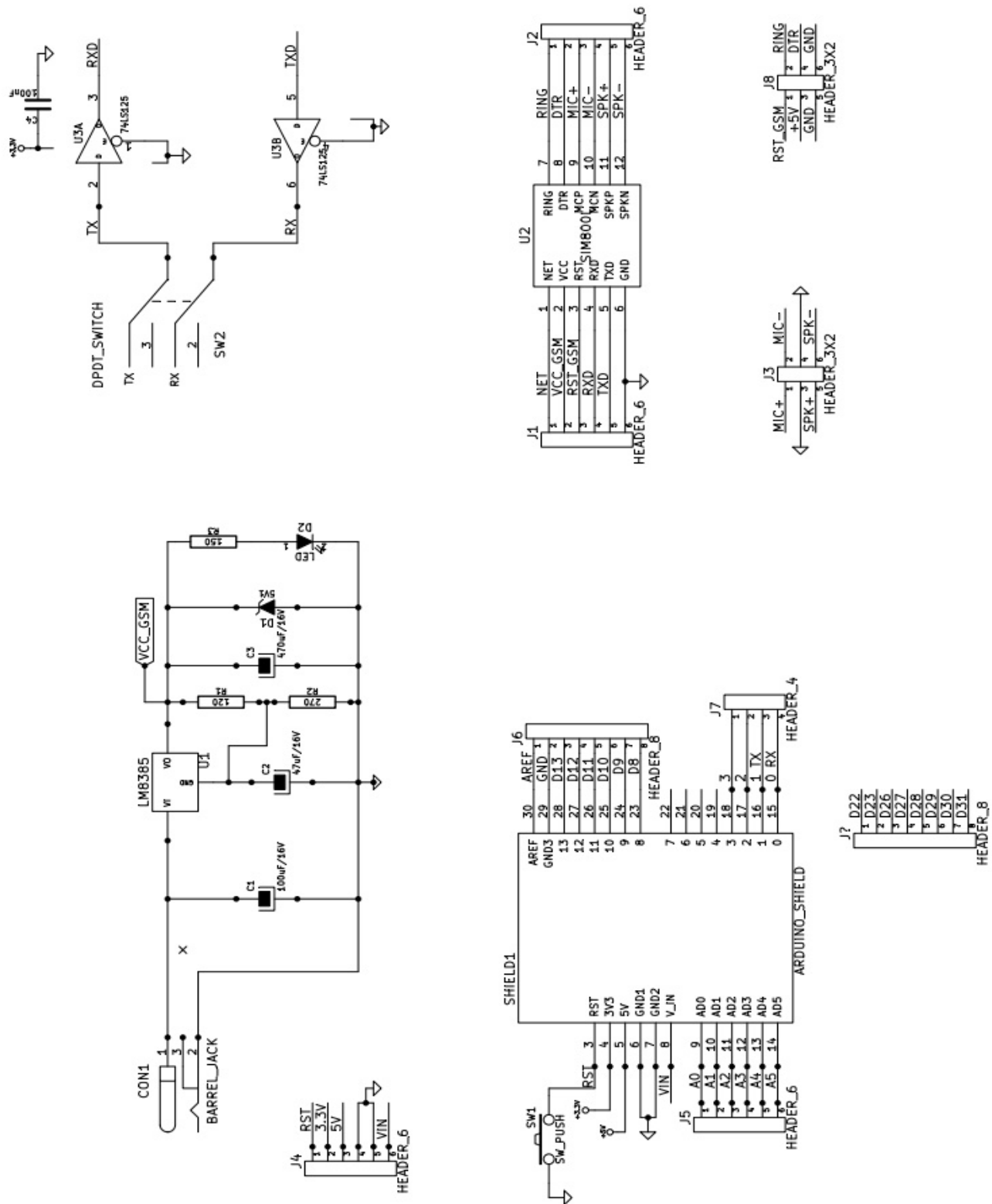


Figure 2.

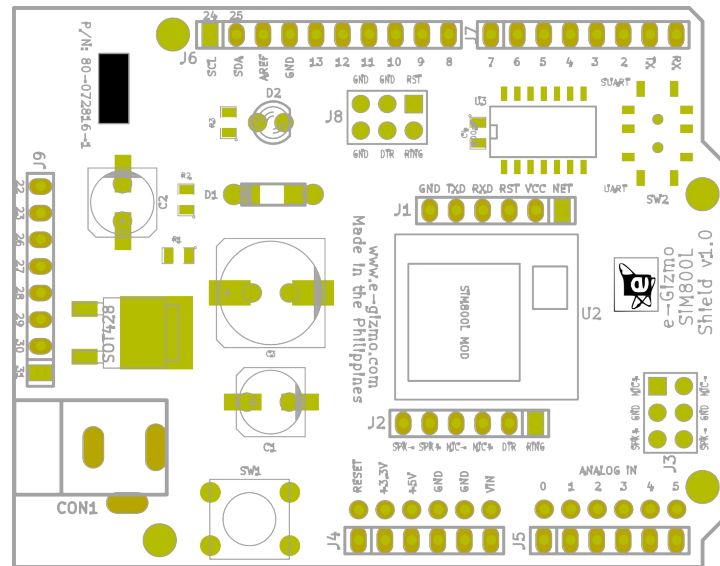


Figure 3. Parts placement

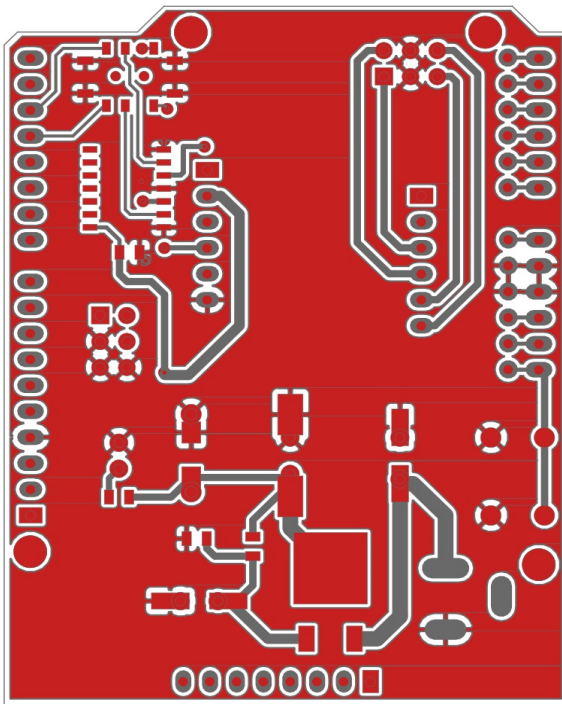


Figure 4. Top Layer guide

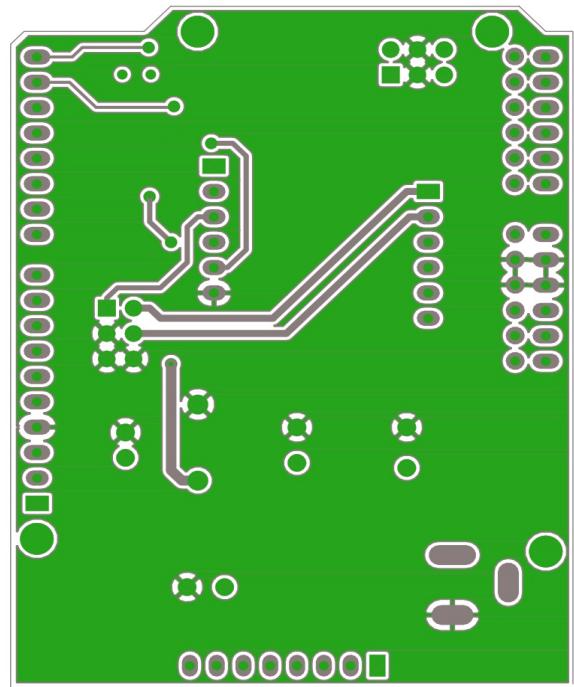


Figure 5. Bottom Layer Guide